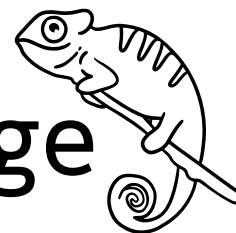


# Masters of Camouflage



You will need a parent or trusted adult to help you with this activity !

***Think about a time you've had to hide—like when you've played a game like of hide-and-seek. When hiding, what were some ways that kept from being seen? Did you move or make any sounds? Why do you think some places were good and others not so much?***

Nightjars are very good at hiding in plain sight. Their colors help them to blend in with their environment. Insects also use camouflage to blend in with their environment and keep them safe from other animals that love munching on them. But it also helps some insects catch prey that don't see them! Their colors, patterns and even physical shape make them indistinguishable from their surroundings.

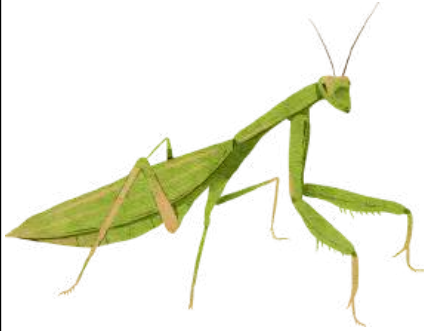
In this activity you're going to go outside (with an adult) and help insects and birds find the best spot for them to blend in such as the grass, fallen leaves, branches, leaves, flowers, dirt, tree trunk and other plants.

You will need:

- pencil
- scissors
- clipboard (optional)
- copy of Masters of Camouflage page

You can carry out this activity in pairs (ask a friend!) or groups. Just print a copy of page 2 (or page 3 for black and white printing) for each person and cut along the lines to make individual animal and insect cards. Then designate one person to read the descriptions on the cards. Work together to find the best spot in your backyard, park or school yard, for each animal and insect to blend in. Write your answers on the cards.

## *Masters of Camouflage*



**Praying Mantis**

color: green or brown

blends in  
with: \_\_\_\_\_  
\_\_\_\_\_



**Nightjar**

color: mottled and  
streaked gray-brown

blends in  
with: \_\_\_\_\_



**Caterpillar**

color: yellow-green

blends in  
with: \_\_\_\_\_  
\_\_\_\_\_



**Grasshopper**

color: greenish-brown

blends in  
with: \_\_\_\_\_  
\_\_\_\_\_



**Owl**

color: reddish-brown and  
gray

blends in  
with: \_\_\_\_\_

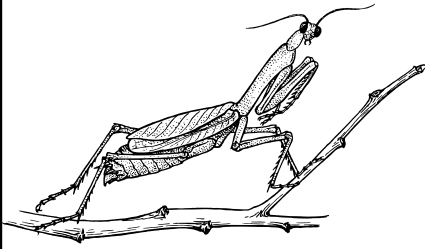


**Centipede**

color: dark brown to  
reddish brown

blends in  
with: \_\_\_\_\_

# Masters of Camouflage



**Praying Mantis**

color: green or brown

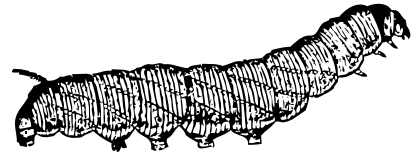
blends in  
with: \_\_\_\_\_  
\_\_\_\_\_



**Nightjar**

color: mottled and  
streaked gray-brown

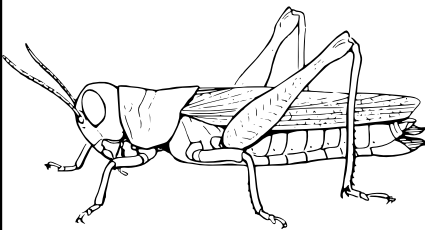
blends in  
with: \_\_\_\_\_



**Caterpillar**

color: yellow-green

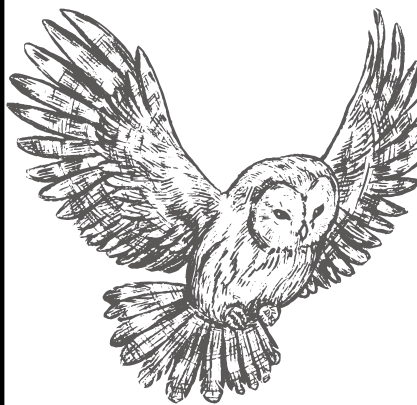
blends in  
with: \_\_\_\_\_  
\_\_\_\_\_



**Grasshopper**

color: greenish-brown

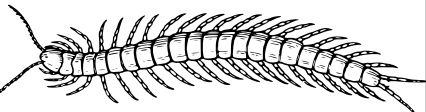
blends in  
with: \_\_\_\_\_  
\_\_\_\_\_



**Owl**

color: reddish-brown and  
gray

blends in  
with: \_\_\_\_\_



**Centipede**

color: dark brown to  
reddish brown

blends in  
with: \_\_\_\_\_