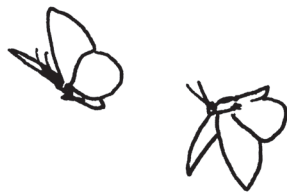
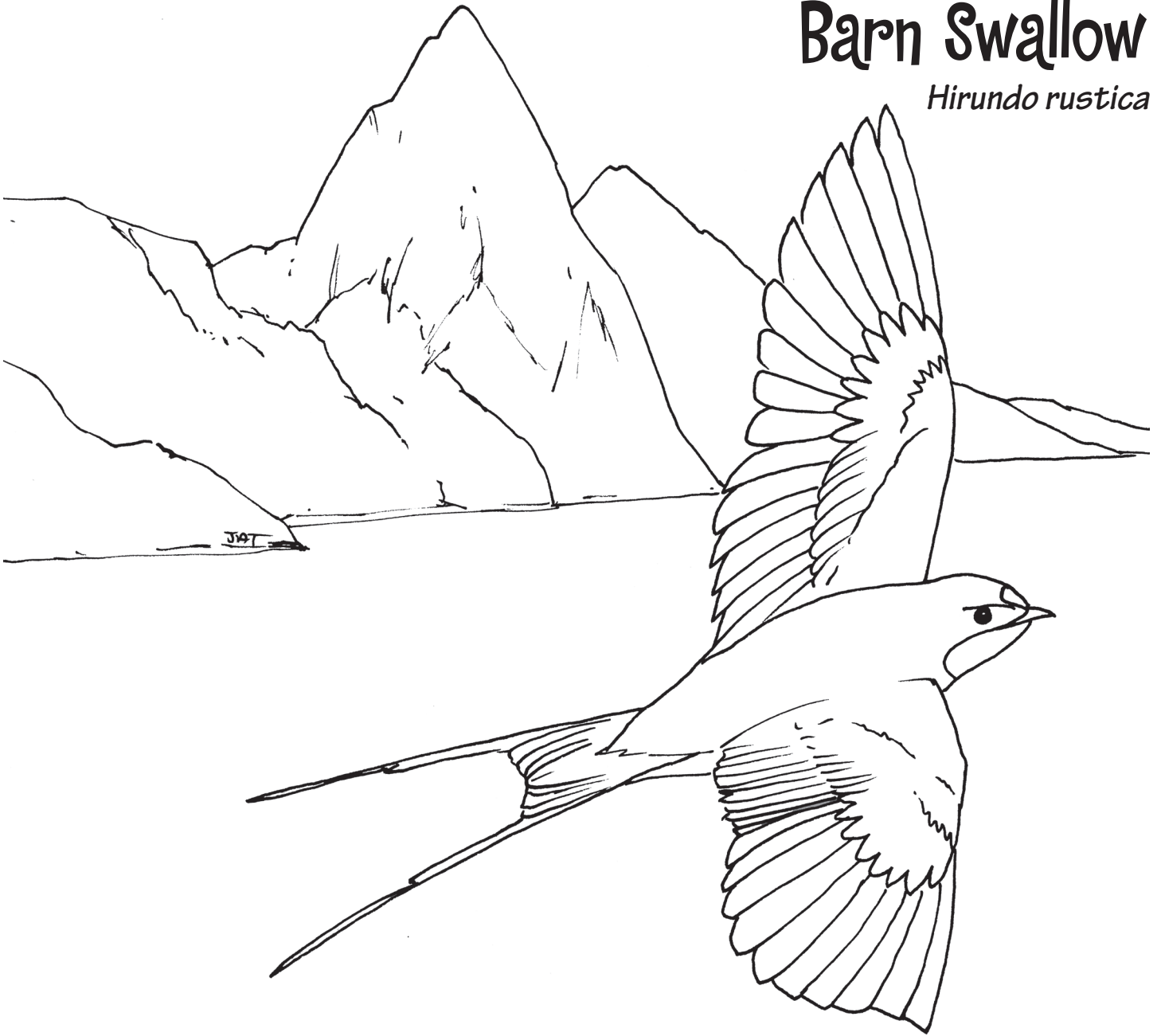


# Barn Swallow

*Hirundo rustica*



## About this Bird

The Barn Swallow is a common migrant during fall and spring. They breed in the northern hemisphere and migrate to the southern hemisphere for the colder winter months. They travel in huge flocks and may cover up to 11,000 km (6,800 miles) on migration. They often line up in large groups on overhead wires with their long forked tails sticking out. Barn Swallows can be seen near wetlands all over the Caribbean in winter or during migration. They swoop and turn, flying fast over the water, catching mosquitoes and other tiny flying insects. *Bird Size 17 cm, 6.75 in.*

## Where this Bird Can Be Found

