

Where is your nest?

Birds nest in a variety of places and build different types of nests. Help these birds find the right nest by drawing a line from the bird to the nest.

STREAMERTAIL



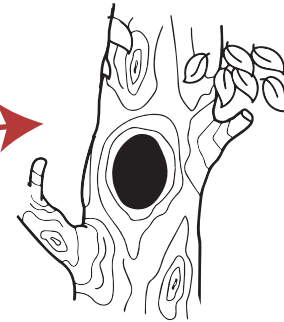
GADELOUPE WOODPECKER



CUBAN TODY



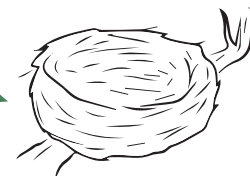
BANANAQUIT



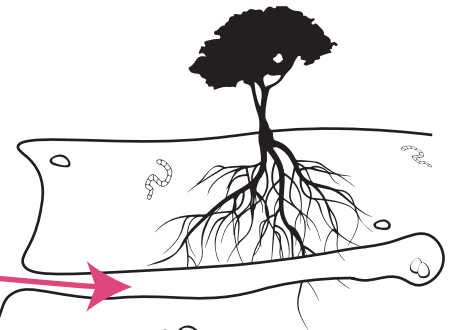
A hole (or cavity) in a tree



A round, covered nest made of dry grass and sticks, with a side entrance



A delicate cup nest made of soft materials like cotton or grass. Held together with lichen or spiderwebs.



A long tunnel in an earth bank that leads to a nest at the end of the burrow