





# A decade of advances in Black-capped Petrel (*Pterodroma hasitata*) research & conservation

Black-capped Petrel Cons. Group  
NAOC, August 2016

James Goetz

Adam Brown

Ernst Rupp

Anderson Jean

Matthew McKown

Patrick Jodice

George Wallace

Jennifer Wheeler





- Distribution
- Nest finding & monitoring
- Conservation, Threats

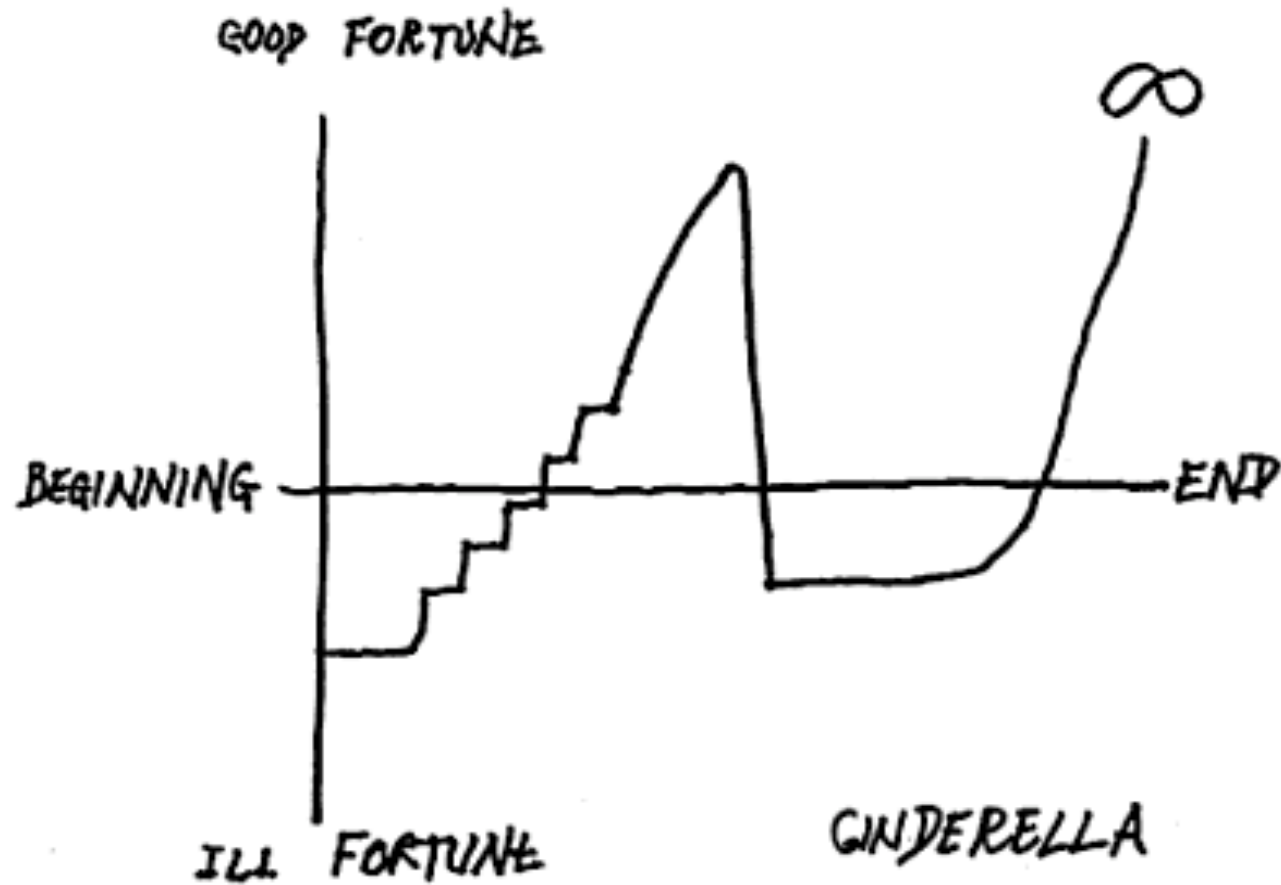


# *Take home messages from a BCPE colleague*

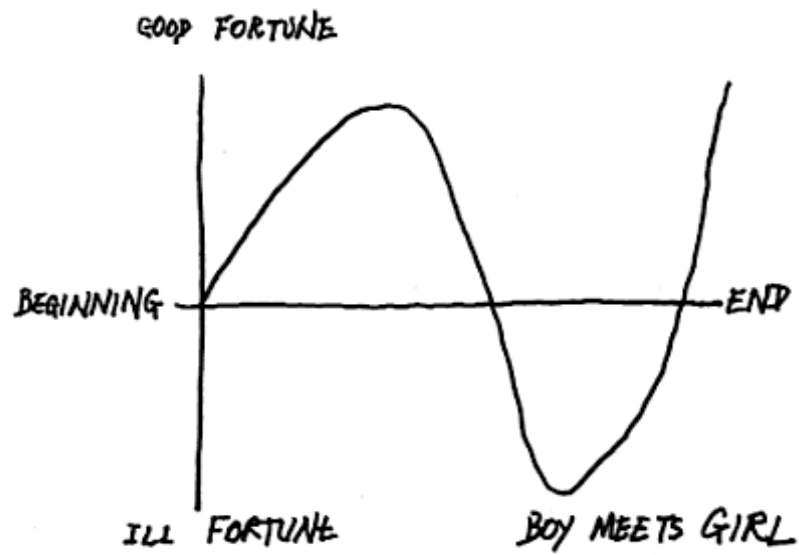
- finding nests takes team work, hard work, still lots of work.
- Massif la Selle (Haiti) highest population, most difficult conservation challenge
- DR less difficult, but much smaller BCPE population.
- Cuba, but worth a try.
- Dominica most interesting (habitat mostly intact).



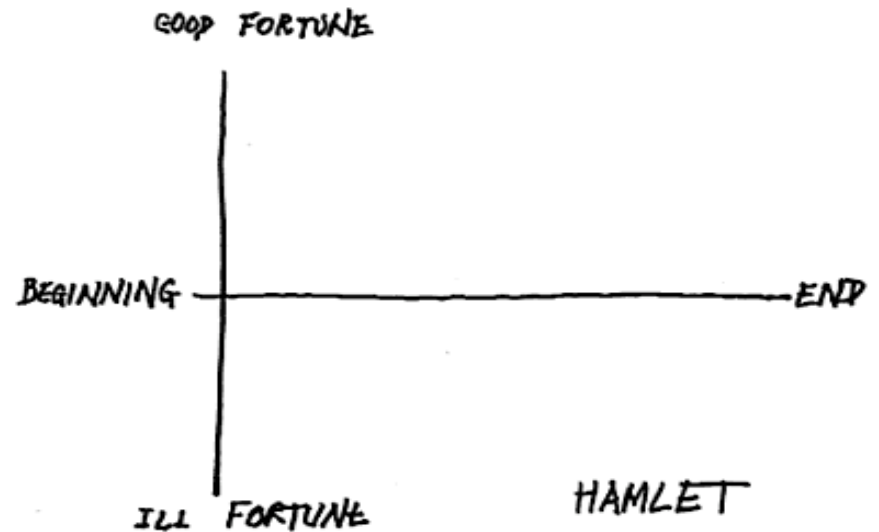
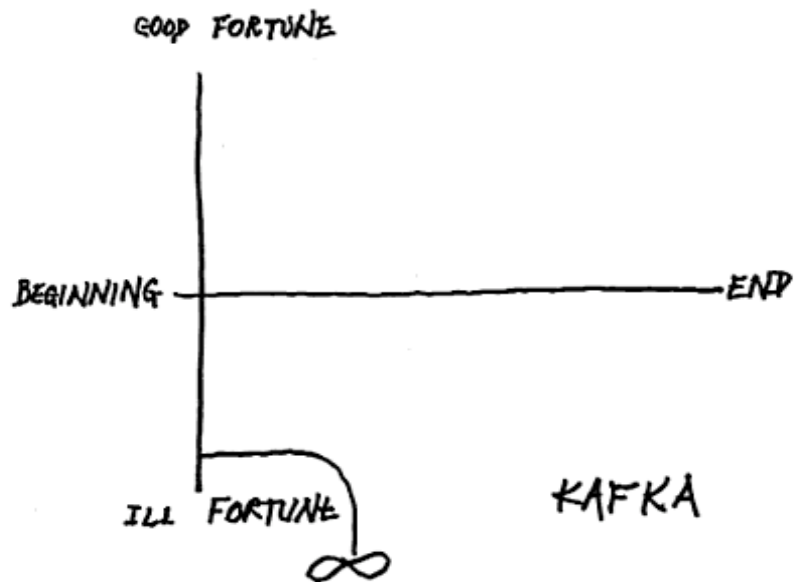
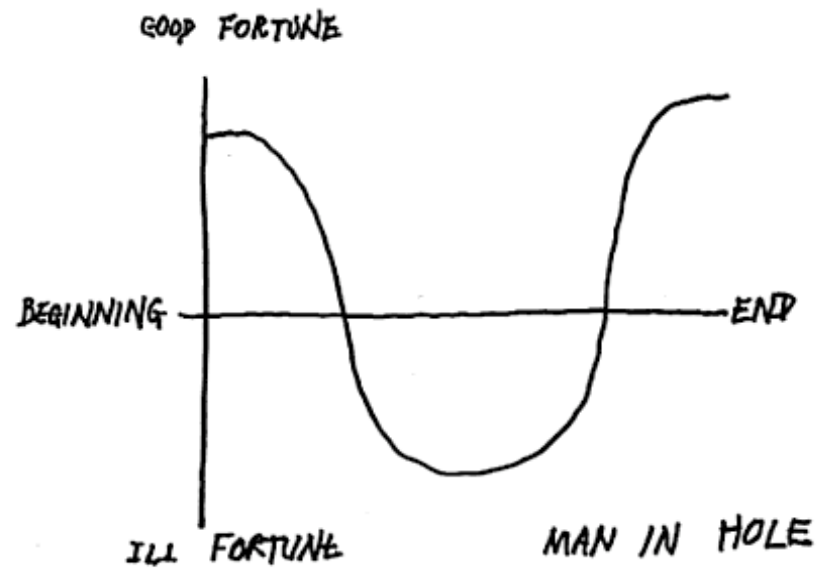




Vonnegut 2006. A man without a country.



N (



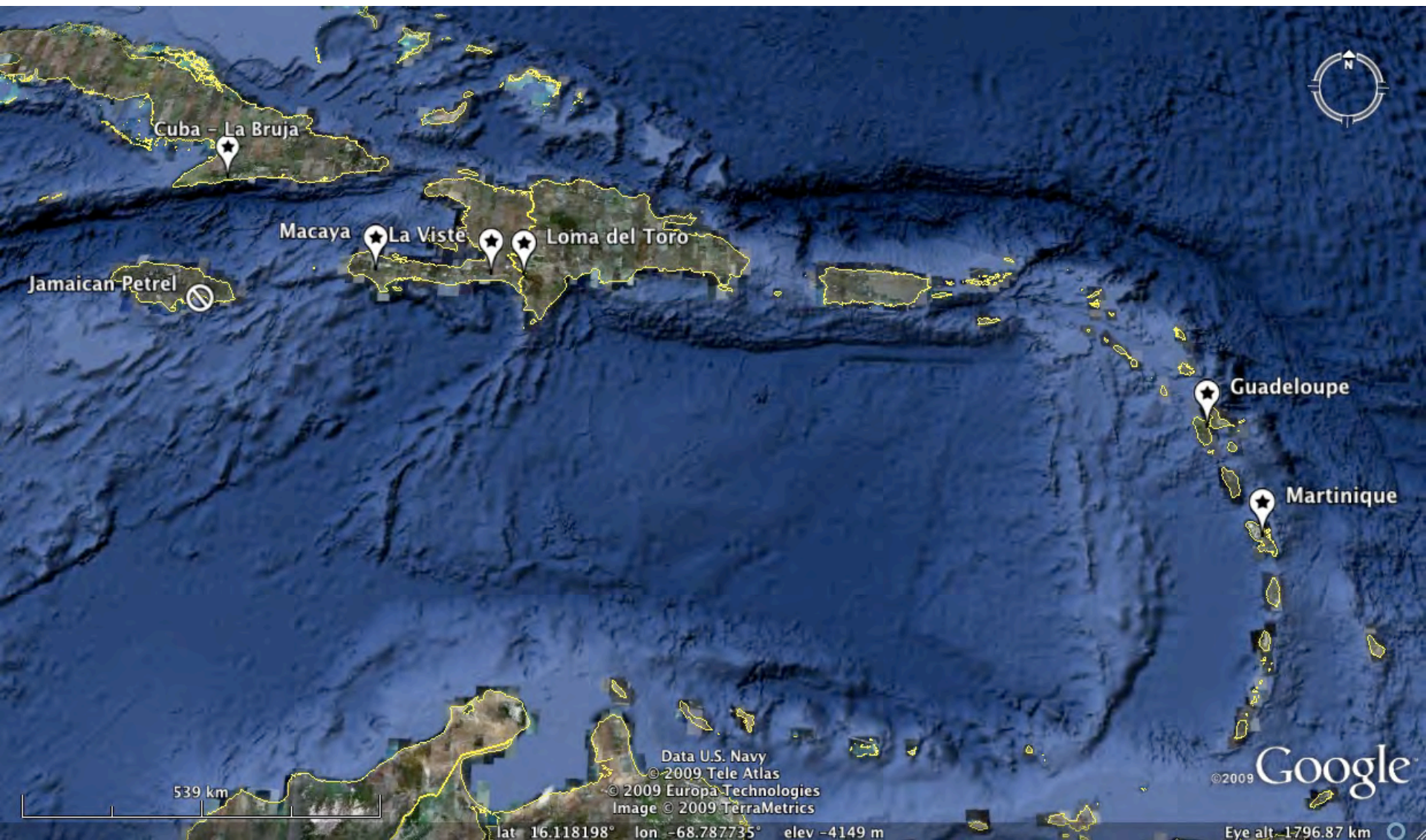




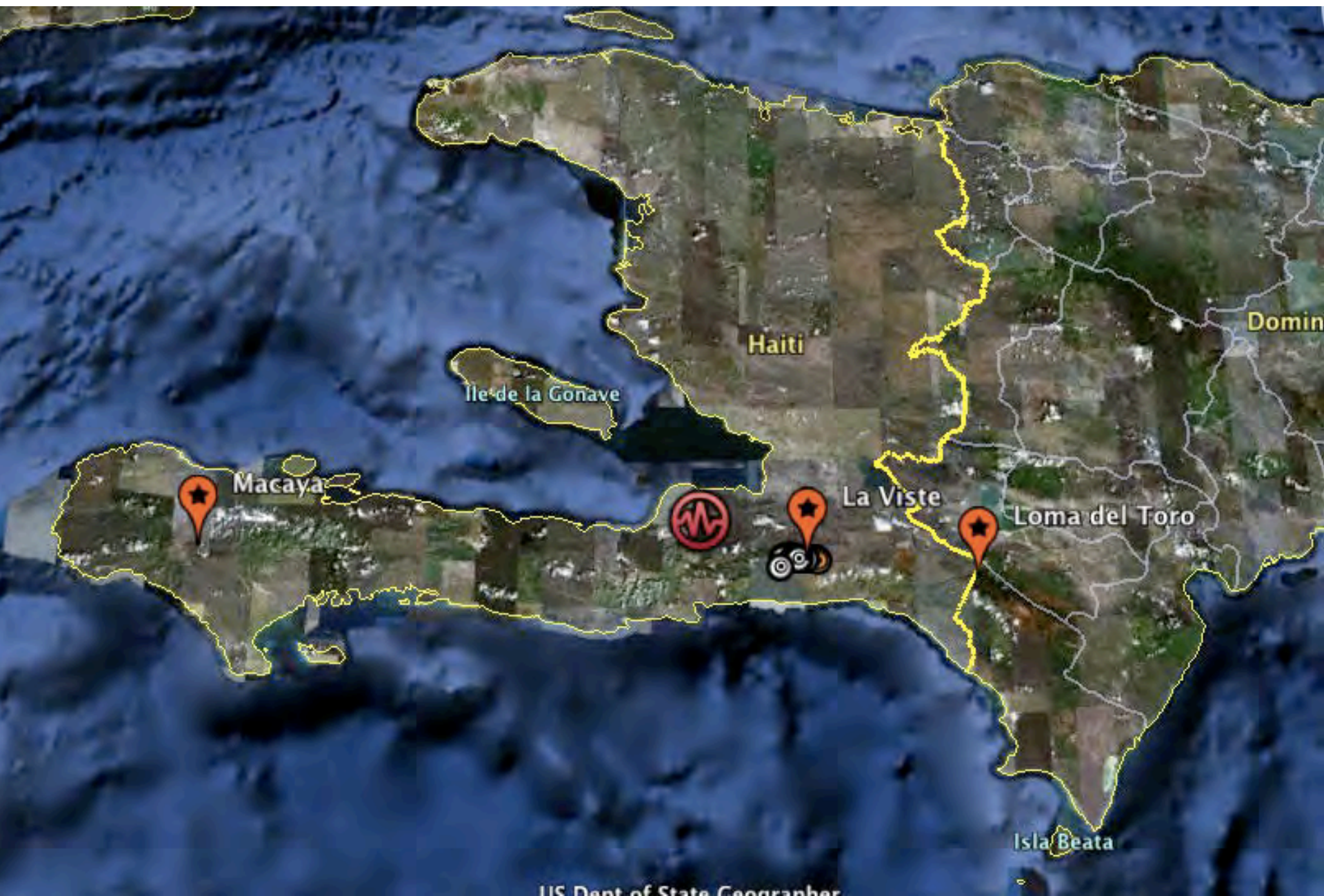














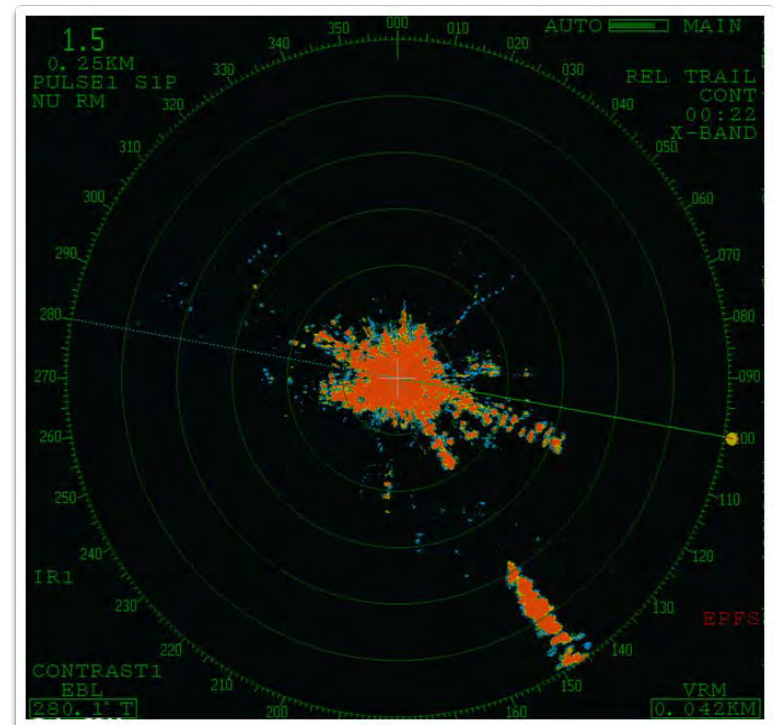


Jodice et al. 2015

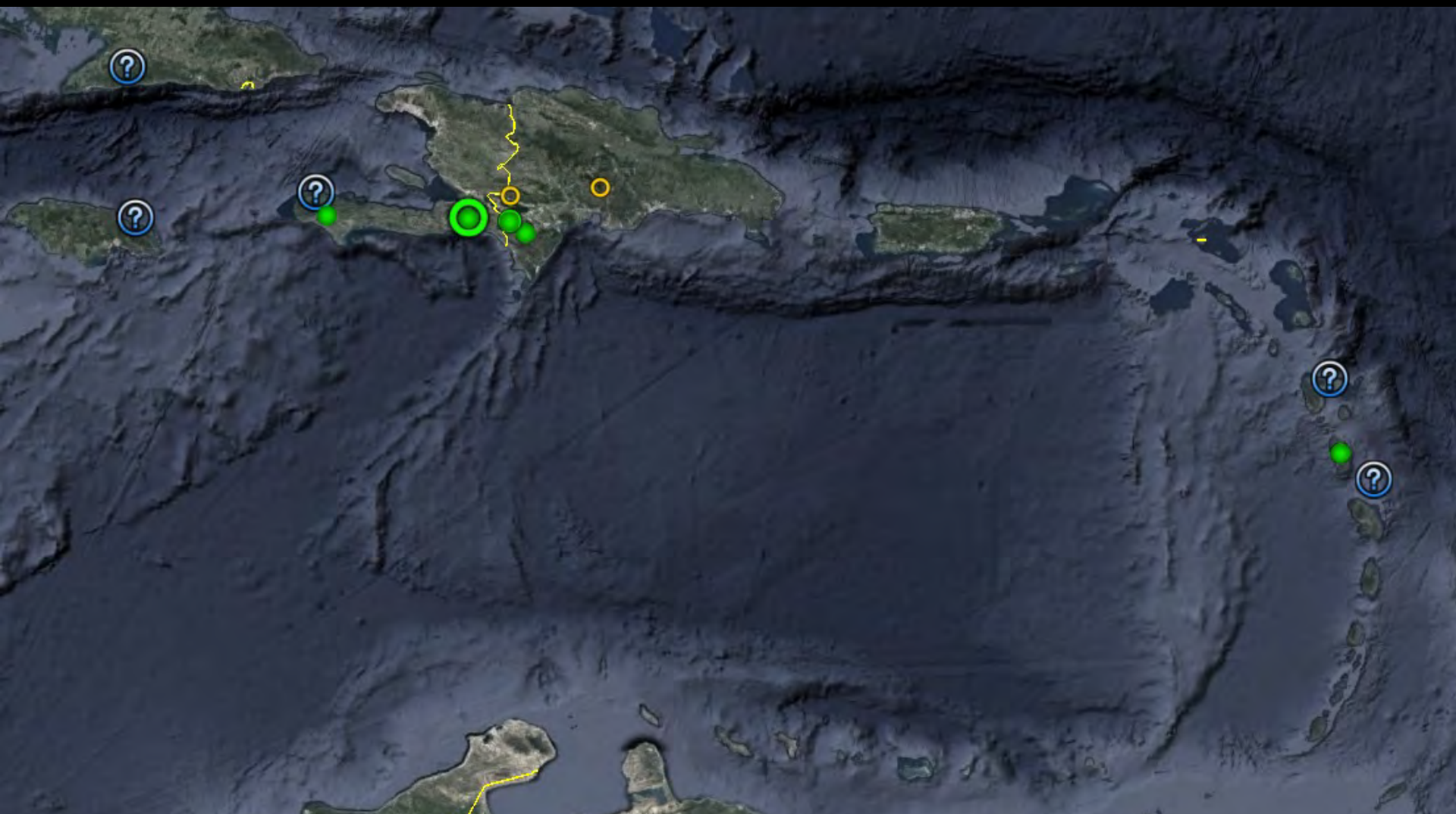
# Radar

2013, 14, 15 Haiti & DR

2016 Jamaica, Dominica























AM11:59 JUN/ 9/2012





PM12:30 ABR/ 2/2012







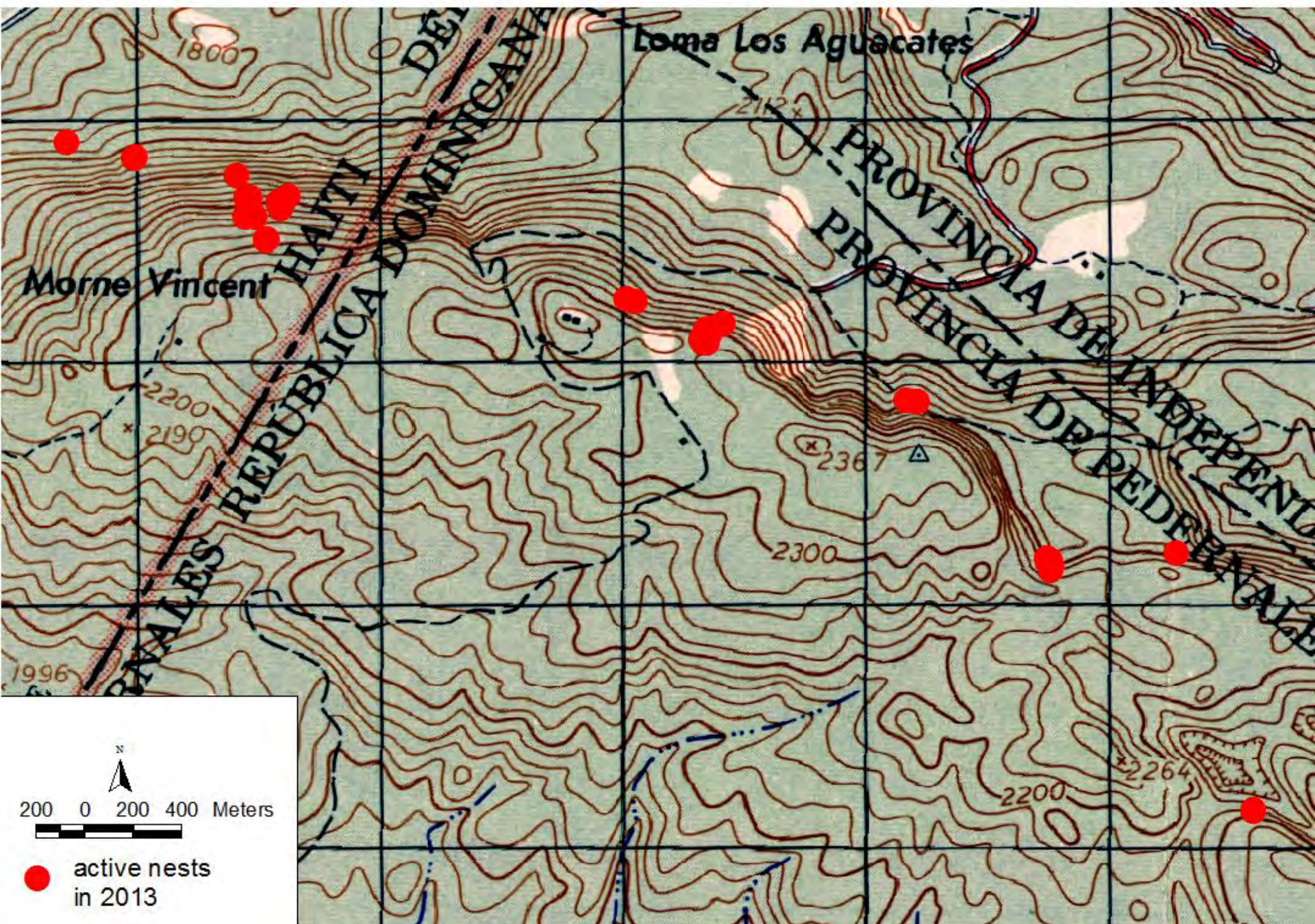




Nest success:

year	Active nests	Fledged	Failed	Successful
2011	3	1	2	33%
2012	30	23	7	76%
2013	43	30	13	70%









HC500 HYPERFIRE



Bird leaving the nest

2011-03-13 1:34:08 AM M 2/10

12°C



HC500 HYPERFIRE

RECONYX

Rat leaving the nest



2011-05-24 11:19:08 AM M 8/10

15°C



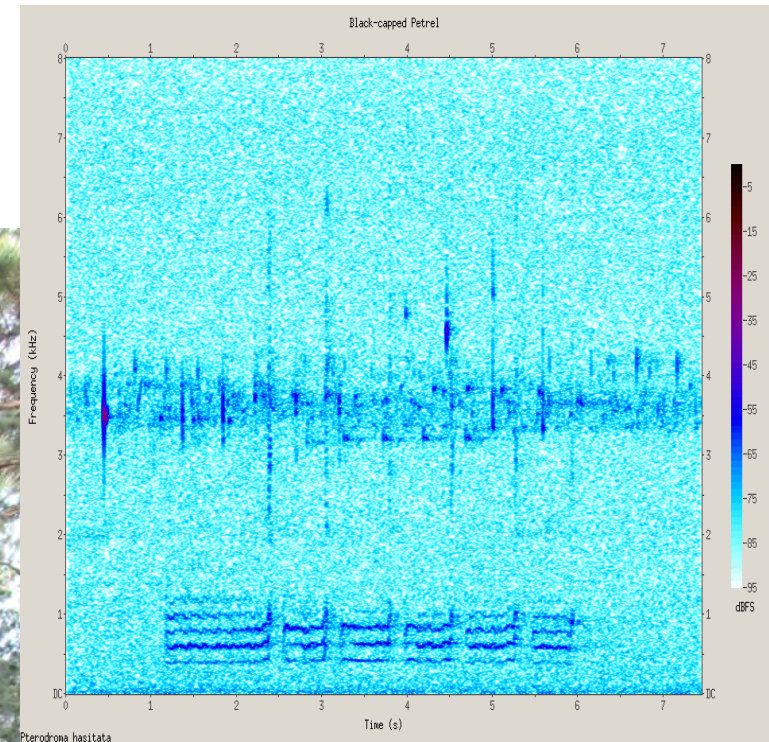
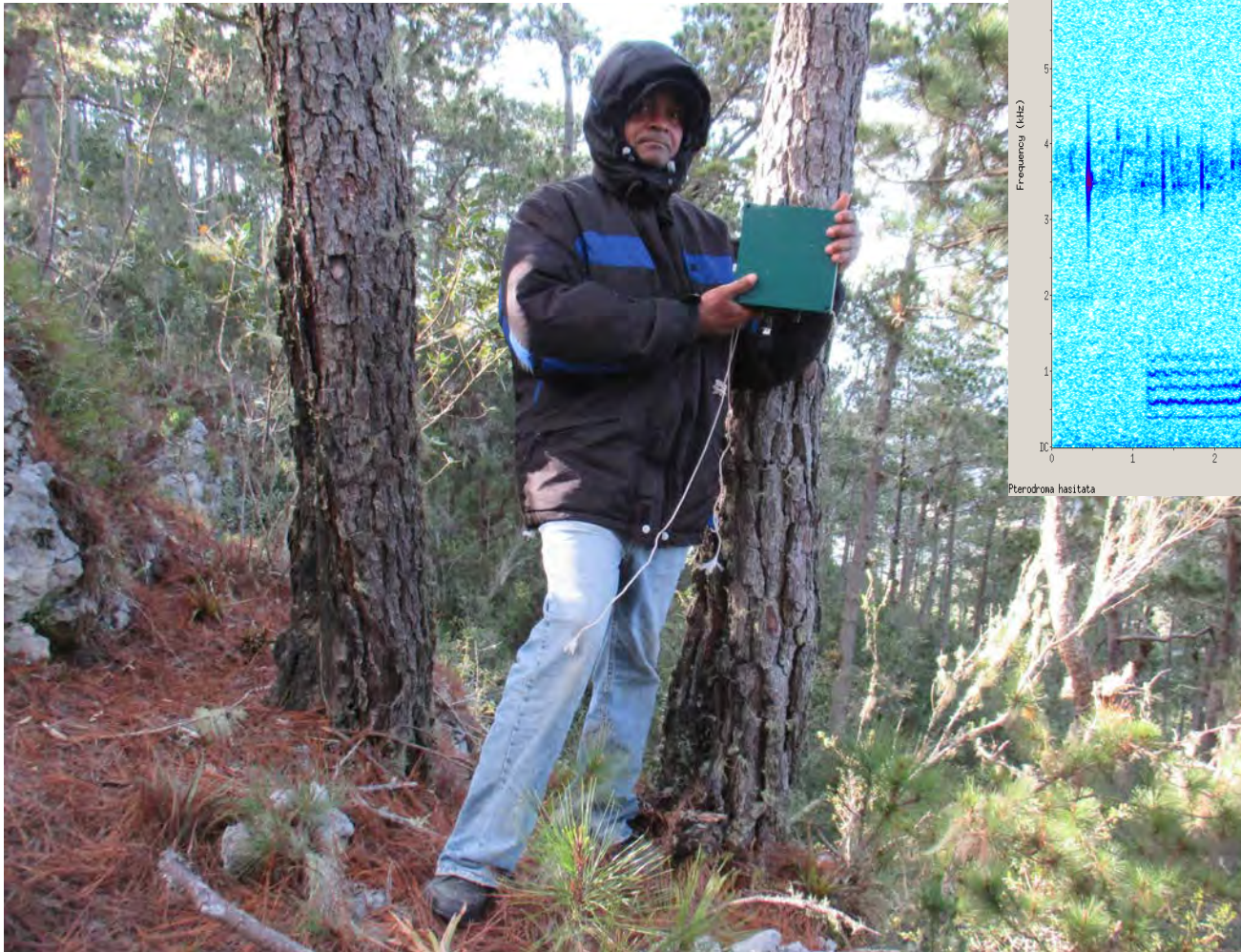
HC500 HYPERFIRE

RECONYX

Dog leaving the nest



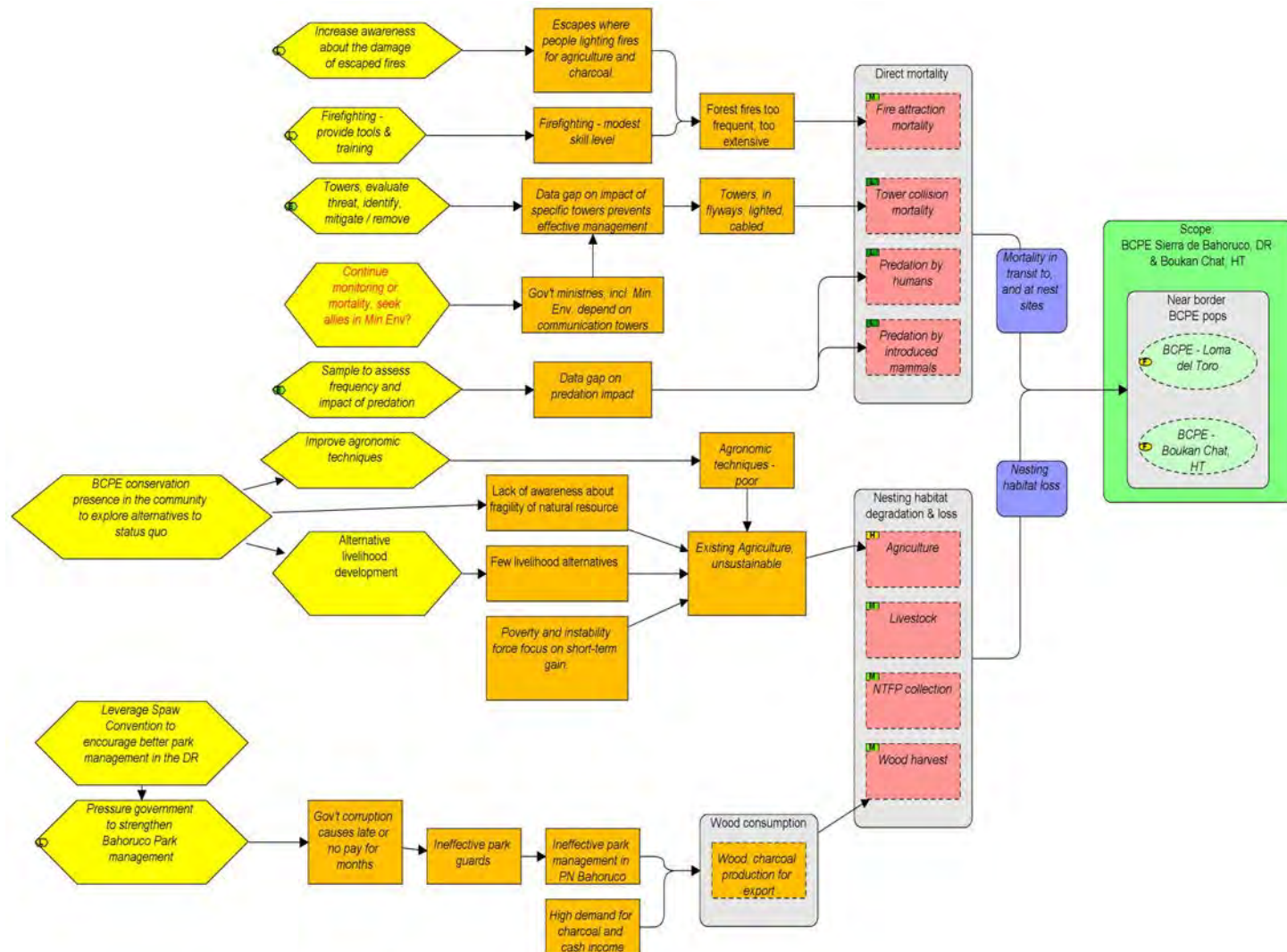
# Automated recordings



Matthew  
McKown  
(Conservation  
Metrics)  
conducting  
analysis



# Open Standards for the Practice of Conservation

































# other threats





















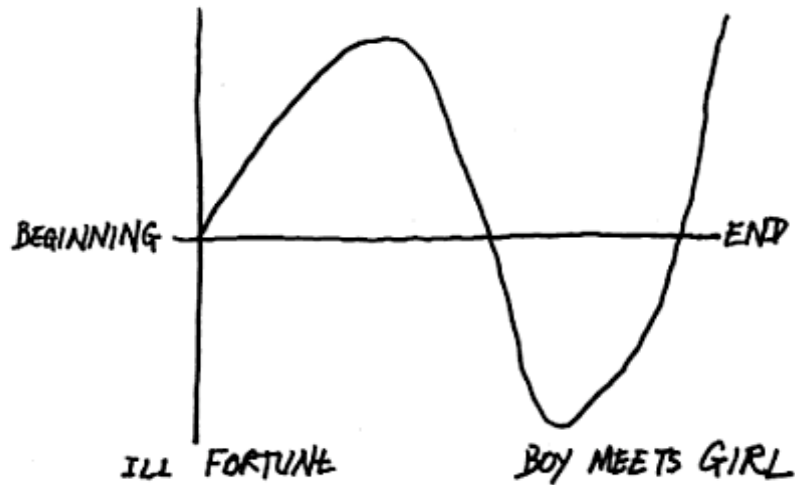






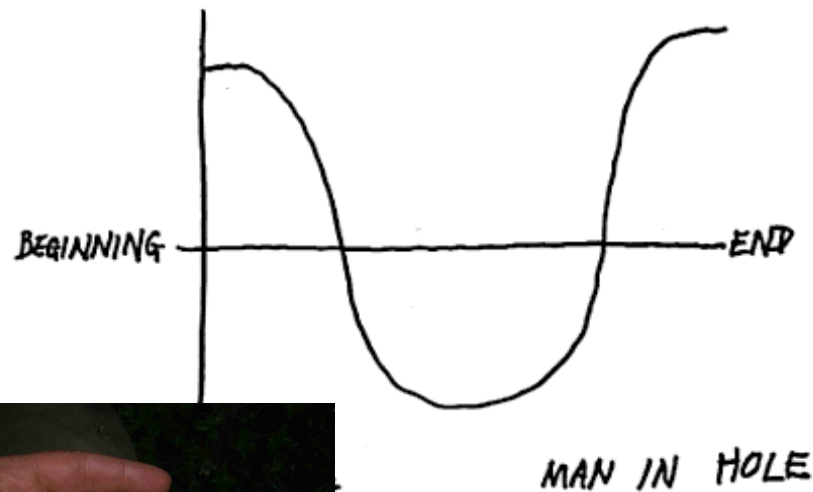


GOOD FORTUNE



GOOD FORTUNE

N (



GOOD FORTUNE

