

2008 La Visite Expedition. View to north from escarpment.



Photo: J. Rhoads



2008 La Visite Expedition. View to east from escarpment.





2008 La Visite Expedition. View to east of remnant escarpment forest, and distant Pic La Selle



*Photo by J. Goetz*



2008 Macaya Expedition. Mixed broadleaf & pine forest on Pic Formon.





2008 La Visite Expedition. Hand-captured bird that landed during surveys.



*Photo: J. Rhoads*





2008 La Visite survey points. Red polygon = remnant broadleaf forest & critical nesting habitat.



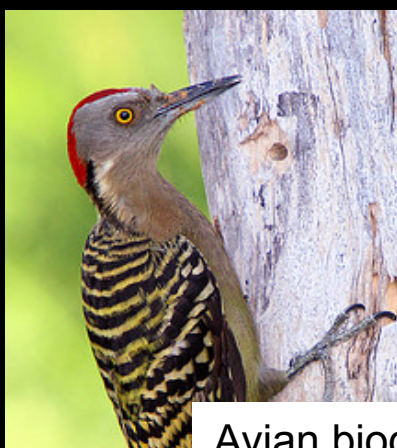


Largest broadleaf forest: 7km long, <400m wide, 230 hectares









Avian biodiversity on Hispaniola

Photos: Miguel Angel Landestoy





Reptile biodiversity on Hispaniola

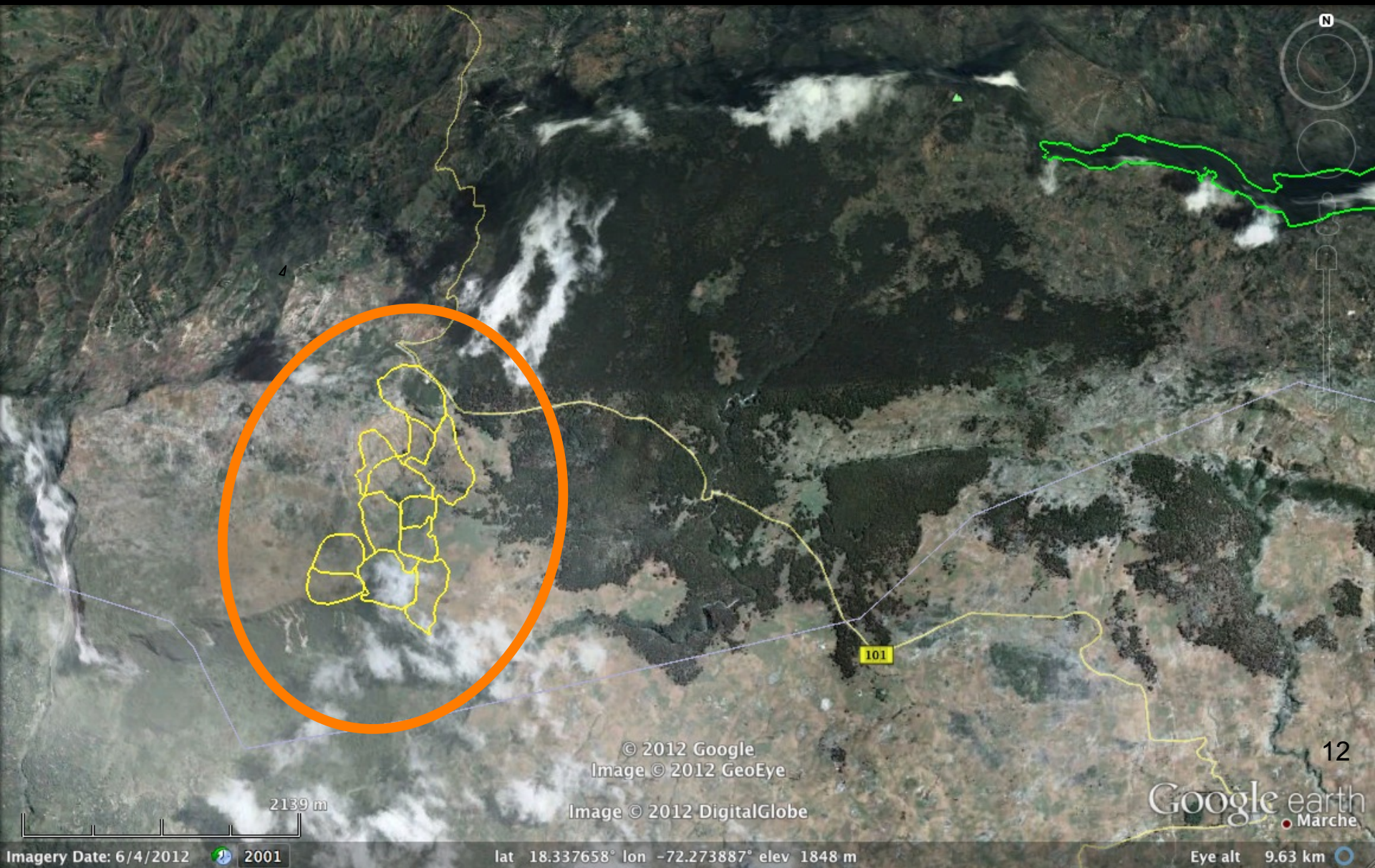
Photos: Miguel Angel Landestoy





2009 La Visite Expedition. Interviews & focus groups to understand local issues & resource use





NMBCA: Landholder parcels targeted for PES for forest conservation & restoration in Berak Valley